



# ZNF.X

Fluorescent Lamp  
LED Tube



**ZONE 1-2 / 21-22**

**IP 66**

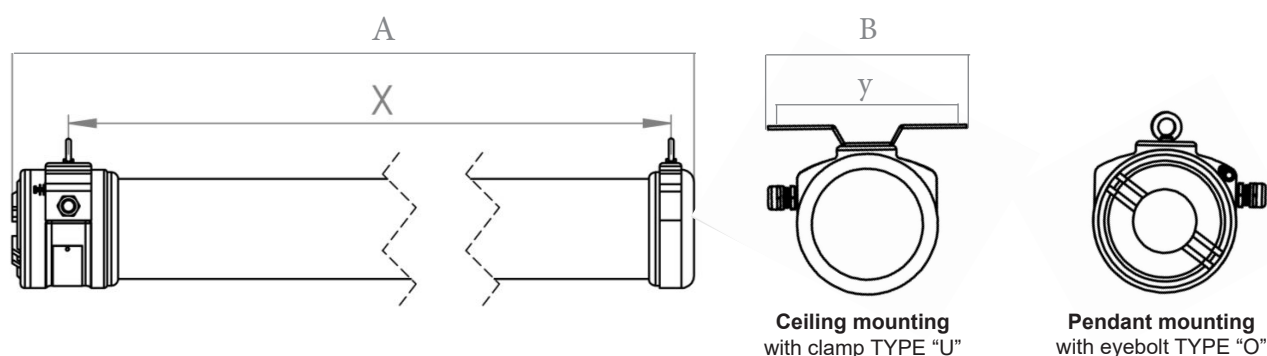
**-20 °C < T<sub>a</sub> < +55 °C**

**Emergency Kit**

**Product**  
**Certification**  
**Marking**  
  
**IP**  
**Ambiant Temp.**  
**Standarts**  
**Cable Entries**  
**Body**  
**Difusser**  
**Gaskets**  
**Paint**  
**Circuit**  
**Rated Voltage**  
**Frequency**  
**Application**

Aluminium Body Fluorescent or Led Tube Lighting Fixtures  
SCA 19 ATEX 015X  
II 2G Ex db IIB T6 Gb  
II 2D Ex tb IIIC T85°C Db  
IP 66  
-20 °C up to +55 °C  
EN60079-0: 2018; EN60079-1: 2014; EN60079-31: 2014  
2x1/2" or 2x3/4"  
Low Cooper Aluminium Alloy  
Shock and high temperature resistant polycarbonate tube  
NBR oring on cover and high temp. res. silicone  
Electrostatic Powder Coat  
Electronic Ballast, T8 lampholder.  
220/240V  
50/60 Hz  
Oil refineries, Chemical and petrochemical plants, Boiler rooms etc.

## DIMENSIONAL DRAWING

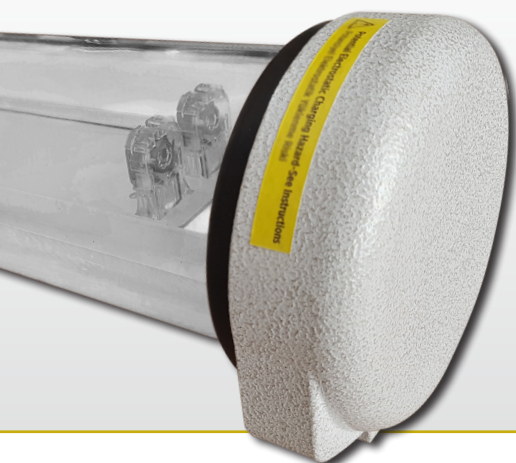


|            | A    | B   | C   | x | y   | weight (kg) |
|------------|------|-----|-----|---|-----|-------------|
| ZNF 2X36   | 1320 | 210 | 142 |   | 186 | 10,5        |
| ZNF 2X36EM | 1320 | 210 | 142 |   | 186 | 10,8        |
| ZNF 2X18L  | 1320 | 210 | 142 |   | 186 | 10,1        |
| ZNF 2X18   | 820  | 210 | 142 |   | 186 | 6,5         |
| ZNF 2X18EM | 820  | 210 | 142 |   | 186 | 6,8         |
| ZNF2X9L    | 820  | 210 | 142 |   | 186 | 6,1         |

# ZNF.2X

36W  
18W  
9W

**Empty** for fluorescent  
**EM** for emergency kit  
**L** for Led Tube



ZNF.X SERIES type fluorescent lamp comprises a lamp tube assembly with two end caps. The housing consists of a transparent polycarbonate tube with aluminium end caps. The electronics are located within the flameproof enclosure. Tube and end caps sealed with cemented joint. Both end caps connected together by two 6 mm diameter tie bars, therefore compressing the tube and cemented joints between caps. The equipment is intended for fixed installation. The equipment has normal fluorescent lamp, led fluorescent lamp and emergency kit variations.

